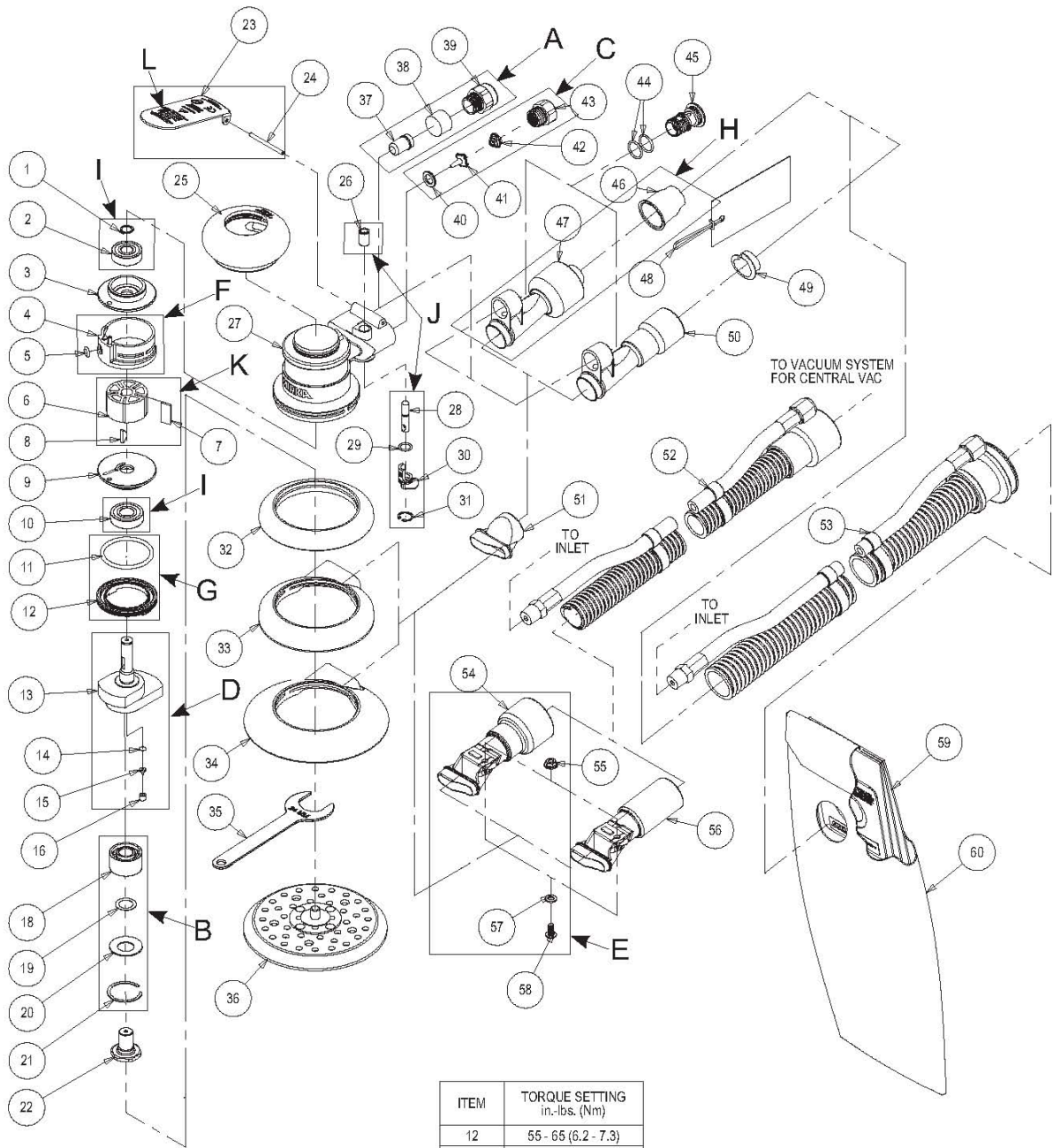


Exploded view for ROS 125 mm & 150 mm



ITEM	TORQUE SETTING in.-lbs. (Nm)
12	55 - 65 (6.2 - 7.3)
39	16 - 20 (1.8 - 2.3)
43	60 - 72 (6.8 - 8.1)
45	36 - 48 (4.1 - 5.2)
58	30 - 35 (3.4 - 3.9)

Mirka code	Item	P/N	Description	Qty.
8993019811	I	MPA0799	Endplate Bearing Kit	
	1	MPA0040	RETAINING RING	1
	2	MPA0021	BEARING	1
8993009311	3	MPB0017	REAR ENDPLATE	1
8993009211	F	MPA0994	Cylinder and O-ring Kit	
	4	MPA0005	CYLINDER ASSEMBLY	1
	5	MPA0042	O-RING	1
8993017711	K	MPA0801	Rotor, Vanes and Key Kit	
	6	MPB0005	ROTOR	1
	7	MPA0010	VANE	5
	8	MPA0041	KEY	1
8993009411	9	MPB0016	FRONT ENDPLATE	1
8993019811	I	MPA0799	Endplate Bearing Kit	
	10	MPA0019	BEARING	1
8993007911	G	MPA0993	Lock ring and O-ring Kit	
	11	MPA0045	O-RING	1
	12	MPA0001	LOCK RING	1
8993013911	13	MPB0277	125/5 mm (3/16 in.) ORBIT AirSHIELD™ SHAFT BALANCER	1
8993010611	D	MPA0980	Shaft Balanser 150 mm/5,0 Kit	
	13	MPB0278	150/5 mm (3/16 in.) ORBIT AirSHIELD™ SHAFT BALANCER	1
	14	MPA0122	FILTER	1
	15	MPA0121	CHECK VALVE	1
	16	MPA0120	RETAINER	1
8993011811	13	MPB0279	125/2.5 mm (3/32 in.) ORBIT AirSHIELD™ SHAFT BALANCER	1
8993013711	D	MPA1670	Shaft Balanser 150 mm/2,5 Kit	
	13	MPB0280	150/2.5 mm (3/32 in.) ORBIT AirSHIELD™ SHAFT BALANCER	1
	14	MPA0122	FILTER	1
	15	MPA0121	CHECK VALVE	1
	16	MPA0120	RETAINER	1
8295692111	17	-	Net Backing Pad 150 mm 51 H 5/16" medium	1
8295592111		-	Net Backing Pad 125 mm 44 H 5/16" medium	
8993019711	B	MPA0802	ROS Spindle Bearing Kit	
	18	MPA0938	DOUBLE ROW BEARING	1
	19	MPA0016	SPACER	1
	20	MPA0017	WASHER	1
	21	MPA0018	RETAINING RING	1
8993011611	22	MPB0018	SPINDLE	1
8993010811	L	MPA0983	Lever Kit 5,0 mm orbit	
	23	MPA1699	LEVER for 5,0 mm (3/16 in) Orbit/12,000 rpm machines	1

	24	MPA0031	PIN		1
		L	MPA0984	Lever Kit 2,5 mm orbit	
8993010911	23	MPA1698	LEVER for 2,5 mm (3/32) Orbit 12,000 rpm machines		1
	24	MPA0031	PIN		1
8993013811	25	MPA0288	65 mm (2 1/2 in.) GRIP (Optional)		OPT.
		MPA0289	70 mm (2 3/4 in.) GRIP (Optional)		OPT.
8993013511		MPA0290	75 mm (3 in.) GRIP (Standard))		1
		J	MPA0800	Speed Valve Kit	
8993019011	26	MPA0015	SLEEVE		1
8993007511	27	MPA0244	HOUSING		1
		J	MPA0800	Speed Valve Kit	
	28	MPA0008	VALVE STEM ASSEMBLY		1
8993019011	29	MPA0043	O-RING		1
	30	MPB0014	SPEED CONTROL		1
	31	MPA0039	RETAINING RING		1
8993014011	32	MPB0012	125/150 mm (5/6 in.) NON-VACUUM SHROUD		1
8993006511	33	MPC0012	SuperVAC™ SHROUD for 125 mm (5 in.) Delta, TE, LP and Screen Abrasive pads		1
8993010011	34	MPC0073	SuperVAC™ SHROUD for 150 mm (6 in.) Screen Abrasive and LP Pads		1
8993008011	35	MPA0022	24 mm PAD WRENCH (supplied with each tool)		1
	36	NA	SEE LITERATURE FOR PADS (type/size determined by model)		1
		A	MPA0797	12 000 rpm Muffler Kit	
8993017311	37	MPA0062	INTERNAL MUFFLER (for 12,000 RPM Machines)		1
	38	MPA0068	MUFFLER INSERT(for 12,000 RPM Machines)		1
	39	MPA0166	MUFFLER HOUSING		1
		C	MPA0798	Air Inlet Kit	
	40	MPA0009	SEAT		1
8993018811	41	MPA0007	VALVE		1
	42	MPA0014	VALVE SPRING		1
	43	MPA0013	INLET BUSHING		1
8993008911	44	MPA0044	O-RING		2
8993011211	45	MPA0006	SGV RETAINER		1
		H	MPA0932	SGV Swivel Fitting Kit	
8993011311	46	MPA0778	28mm (1 in.) HOSE SEAL		1
	47	MPA0410	28 mm (1 in.) HOSE SuperVAC™ SGV SWIVEL EXHAUST ASSEMBLY (Standard for SGV)		1
	48	MPA0856	19mm (3/4 in.) HOSE SEAL TAG		OPT.
		MPA0931	28mm (1 in.) HOSE SEAL TAG		1
	49	MPA0854	19mm (3/4 in.) HOSE SEAL		OPT.
	50	MPA0409	19 mm (¾ in.) HOSE SuperVAC™ SGV SWIVEL EXHAUST ASSEMBLY (Optional for SGV)		OPT.
8993011511	51	MPC0108	SuperVAC™ SGV EXHAUST ADAPTER (for use with SuperVAC™ Shroud)		1

8993306711	52	MPA0300	Ø 19 mm (¾ in.) VAC HOSE TO Ø 19 mm (¾ in.) x Ø 28 mm (1 in.) HOSE ADAPTER COUPLING AND AIRLINE ASSEMBLY INCLUDES: MPA0200 Ø 19 mm (¾ in.) x 1.5 m (5 ft.) Vacuum Hose, MPB0088 19 mm (¾ in.) Hose x 28 mm (1 in.) Hose Adapter, MPA0302 Ø 6.3 mm (¼ in.) x 1.5 m (5 ft.) Airline with Fittings, MPA0301 Bungee for Ø 6.3 mm (¼ in.) Airline & Ø 19 mm (¾ in.) Vacuum Hose (5)	OPT.
8993039211		MPA0392	Ø 28 mm (1 in.) VAC HOSE TO Ø 28 mm (1 in.) x Ø 38 mm (1 ½ in.) FRICTION FIT ADAPTER AND AIRLINE ASSY. (Opt.) INCL.: MPA0034 Ø 28 mm (1 in.) x 1.8 m (6 ft.) Vacuum Hose, MPB0092 Ø 28 mm (1 in) Hose Thread x Ø 38 mm (1 ½ in) Friction Fit Adapter, MPA0033 Ø 6.3 mm (¼ in) x 1.8 m (6 ft.) Airline with Fittings, MPA0027 Bungee for Ø 6.3 mm (¼ in.) Airline & Ø 28 mm (1 in.) Vac.Hose (5)	OPT.
8993006711	53	MPA0412	Ø 28 mm (1 in.) VAC HOSE TO Ø 28 mm (1 in.) DOUBLE BAG FITTING AND AIRLINE ASSY. (Std for SGV) INCL.: MPA0034 Ø 28 mm (1 in) x 1.8 m (6 ft) Vacuum Hose, MPB0123 Ø 28 mm (1 in) Hose to Double Bag Vacuum Fitting, MPA0033 Ø 6.3 mm (¼ in) x 1.8 m (6 ft) Airline with Fittings, MPA0027 Bungee for Ø 6.3 mm (¼ in.) Airline & Ø 28 mm (1 in.) Vacuum Hose (5)	1
8993041111		MPA0411	Ø 19 mm (¾ in.) VAC HOSE TO Ø 19 mm (¾ in.) DOUBLE BAG FITTING AND AIRLINE ASSEMBLY (Opt. for SGV) INCL.: MPA0200 Ø 19 mm (¾ in) x 1.5 m (5 ft) Vacuum Hose, MPB0133 Ø 19 mm (¾ in) Hose To Double Bag Vacuum Fitting, MPA0302 Ø 6.3 mm (¼ in) x 1.5 m (5 ft) Airline with Fittings, MPA0301 Bungee for Ø 6.3 mm (¼ in) Airline & Ø 19 mm (¾ in) Vacuum Hose (5)	OPT.
		E MPA0988	CV Swivel Fitting Kit 28 mm	
	54	MPA0099	SuperVAC™ CV 28 mm (1 in.) SWIVEL EXHAUST ASSEMBLY (Standard for CV)	1
8993006611	55	MPA0048	NUT	1
	57	MPA0047	WASHER	1
	58	MPA0769	SCREW	1
		- MPA0987	CV Swivel Fitting Kit 19 mm	OPT.
	55	MPA0048	NUT	1
8993013611	56	MPA0205	SuperVAC™ CV 19 mm (¾ in.) SWIVEL EXHAUST ASSEMBLY (Optional for CV)	OPT.
	57	MPA0047	WASHER	1
	58	MPA0769	SCREW	1
8993206511	59	MPA0465	10 PACK OF VACUUM BAG INSERTS	1
8993206011	60	MPA0658	VACUUM BAG	1